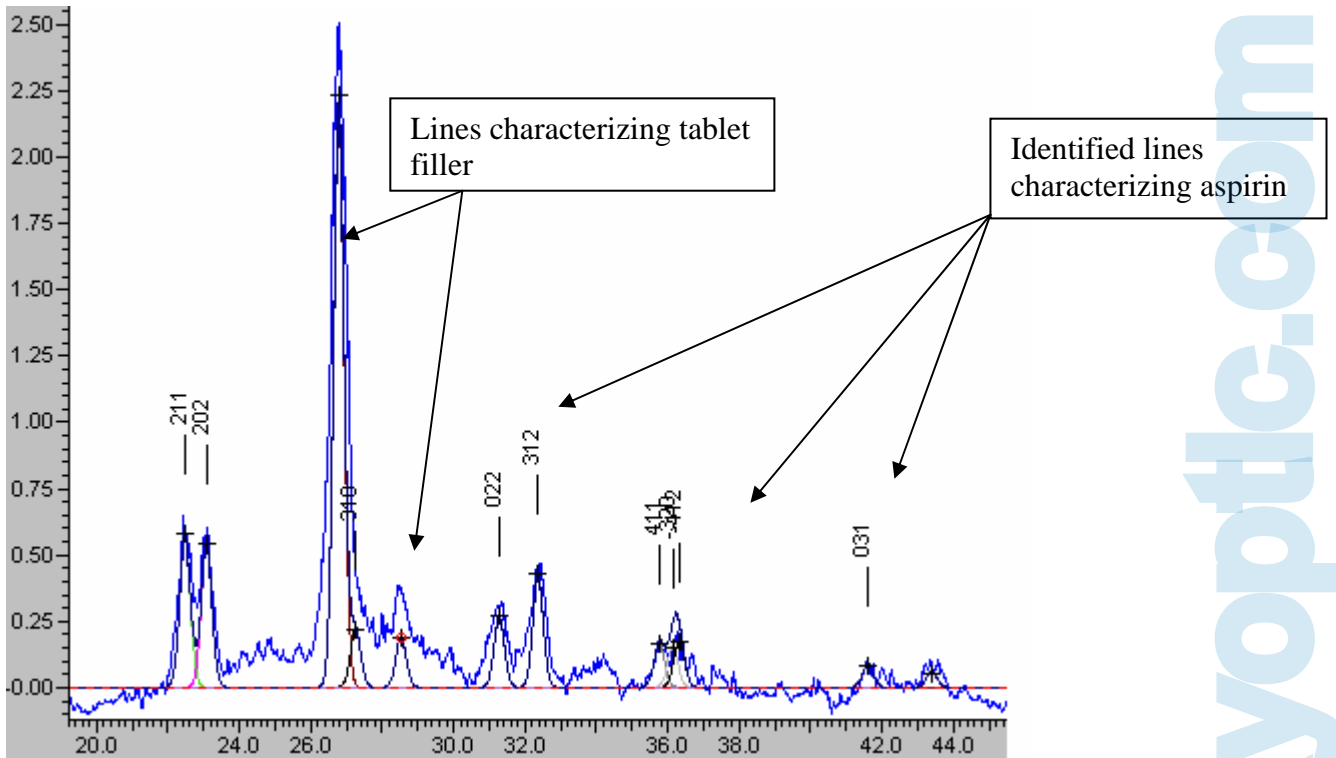
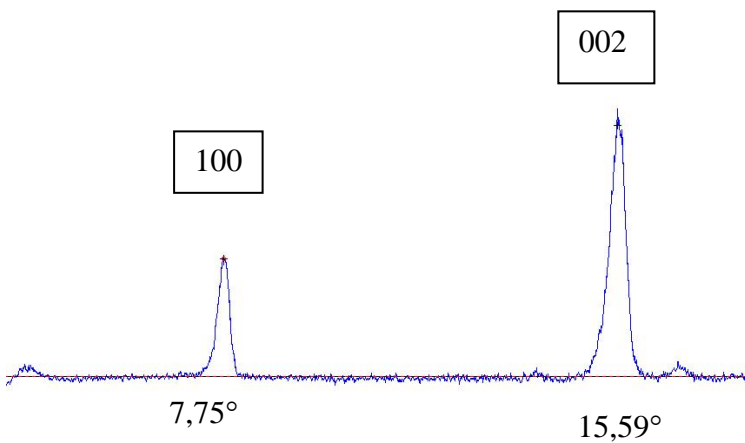


Pharmaceutical Industry

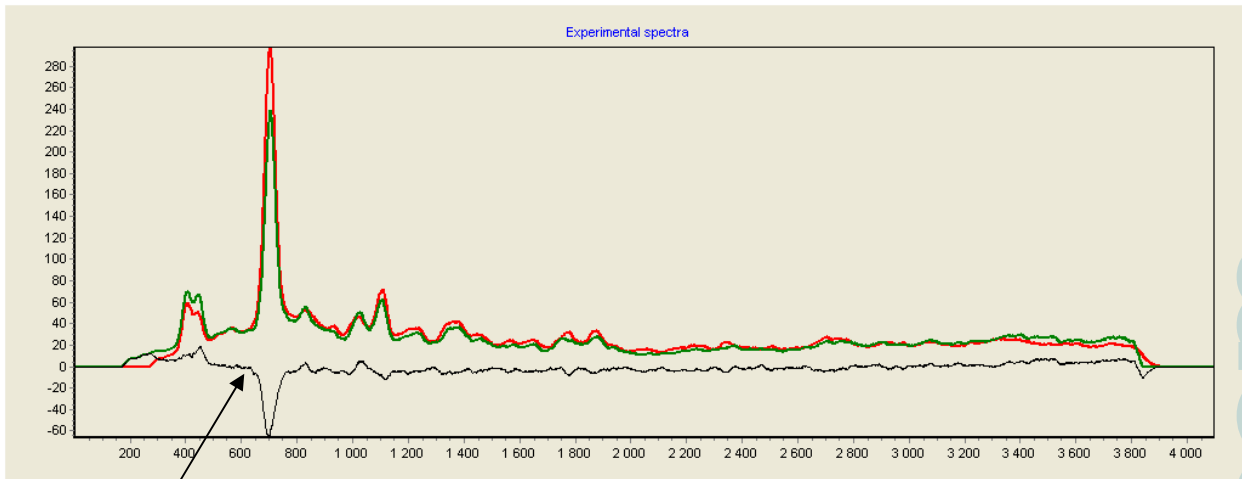


A fragment of diffractogram of industrial aspirin sample within the interval of angles that is most critical for identification.

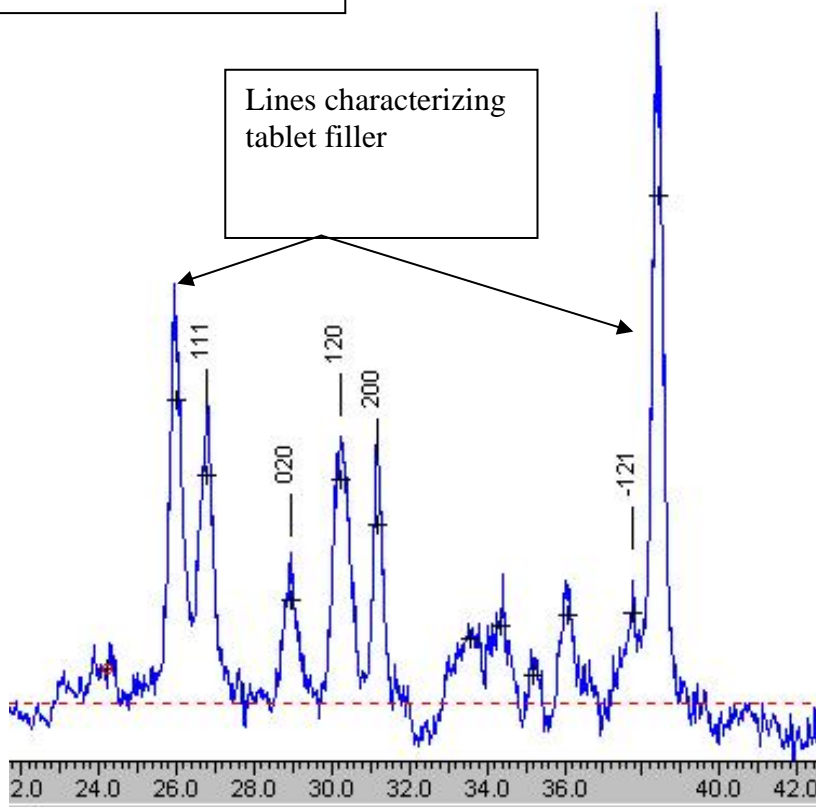


A fragment of aspirin diffractogram within the interval of angles between 1° and 20° according to $2\theta^\circ$ featuring the strongest lines

Spectra comparison of *aspirins* made by different manufacturers



Difference in spectra



Diffractogram of Acetylcysteine, the active agent of soluble table for cough